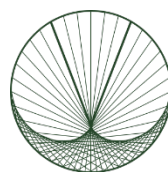


# AAA INDIA OPPORTUNITY FUND

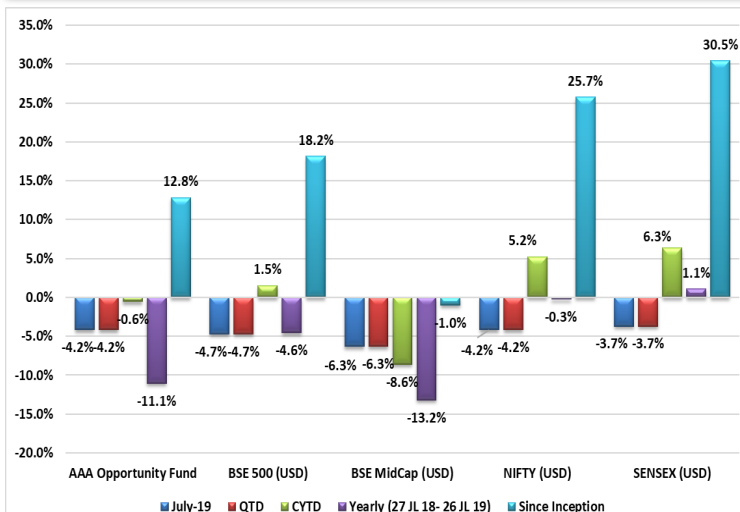
Fund Factsheet: July 2019

NAV: USD 112.84

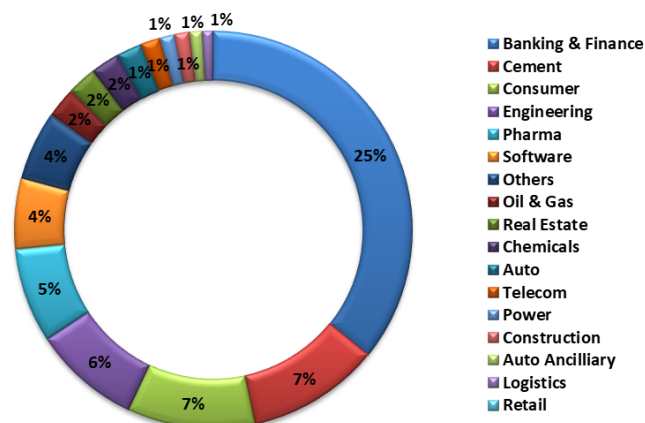


**VIKASA**  
CAPITAL ADVISORS

## PERFORMANCE\*\*



## SECTOR ALLOCATION



## HOLDINGS (%)

Security Name	% Holding
Housing Development Finance Corporation Ltd	4.22%
HDFC Bank Ltd - FII	3.80%
Larsen & Toubro Ltd	3.49%
Bajaj Finance Limited	3.45%
Infosys Limited	2.62%
Axis Bank Ltd	2.52%
State Bank of India	2.52%
ICICI Bank Ltd	2.33%
Shree Cement Ltd	2.24%
JB Chemicals & Pharmaceuticals Ltd	1.81%
Kotak Mahindra Bank Limited	1.79%
Titan Co Ltd	1.75%
Asian Paints Ltd	1.75%
Reliance Industries Limited	1.70%
ICICI Prudential Life Insurance Company Limited	1.70%
Ultratech Cement Ltd	1.67%
Prestige Estates Projects Limited	1.66%
Sun Pharmaceutical Industries Ltd	1.60%
Carborundum Universal Ltd	1.54%
Polycab India Limited	1.51%
3M India Ltd	1.45%
ACC Ltd	1.44%
Maruti Suzuki India Ltd	1.42%
Tata Consultancy Services Ltd	1.38%
Crompton Greaves Consumer Electricals Ltd	1.38%
Bank of Baroda	1.37%
The Ramco Cements Ltd.	1.33%
Britannia Industries Ltd	1.28%
City Union Bank Ltd	1.09%
Sterlite Technologies Ltd	1.09%
Timken India Ltd	1.02%
HIKAL LTD	1.01%
Balaji Animes Ltd	0.94%
Cadila Health Care Ltd	0.89%
CESC LTD	0.85%
Ashoka Buildcon Ltd	0.85%
JK Cement Ltd	0.78%
Gabriel India Ltd	0.69%
Asahi Songwon colors Ltd	0.69%
Quess Corp Ltd	0.65%
TCI Express Limited	0.63%
CENTURY PLYBOARDS (INDIA) LTD	0.56%
Whirlpool of India Limited	0.46%
SH Kelkar & Co LTD	0.27%
Cash	30.83%
Total	100.00%

## FUND FACTS

NAV Frequency	Weekly
Investment Manager	VIKASA Investment Management Ltd
Investment Advisor	AlfAccurate Advisors Pvt Ltd
Benchmark	BSE 500 Index
ISIN	MU0568S00008
Inception Date	24 October 2016
Custodian	Edelweiss Custody Services
Administrator	Apex Fund Administrators
Auditors	KPMG
Valuation Day	Every Friday (T)
Dealing Day	T+1
Performance Fees	Nil
Exit Fees	2.0% (first 12 months)
Management Fee	2.0%

Performance USD (%)**	JULY-19	QTD	CYTD	Yearly (July 2018-July 2019)	Since Inception*
AAA Opportunity Fund	-4.2%	-4.2%	-0.6%	-11.1%	12.8%
BSE 500 (USD)	-4.7%	-4.7%	1.5%	-4.6%	18.2%
BSE MIDCAP (USD)	-6.3%	-6.3%	-8.6%	-13.2%	-1.0%
NIFTY (USD)	-4.2%	-4.2%	5.2%	-0.3%	25.7%
SENSEX (USD)	-3.7%	-3.7%	6.3%	1.1%	30.5%

\*Inception Date: 24 October 2016 \*\*Performance as at 26<sup>th</sup> July 2019

**IMPORTANT LEGAL NOTICE:** This report is provided by VIKASA Investment Management Ltd for information purposes only and is meant for investment professional use. Neither the information nor any opinion expressed constitutes an offer or an invitation to make an offer, to buy or sell any fund. This report does not have regard to the specific investment objectives and financial situation of any specific person who may receive this report. Investors should seek financial advice regarding the appropriateness of investing in any funds recommended in this report and should understand that statements regarding future prospects may not be realized. Investors should note that each fund's price or value may rise or fall. Past performance is not a guide to future performance. Dated August 2019.